

“ONDA DW” Bench

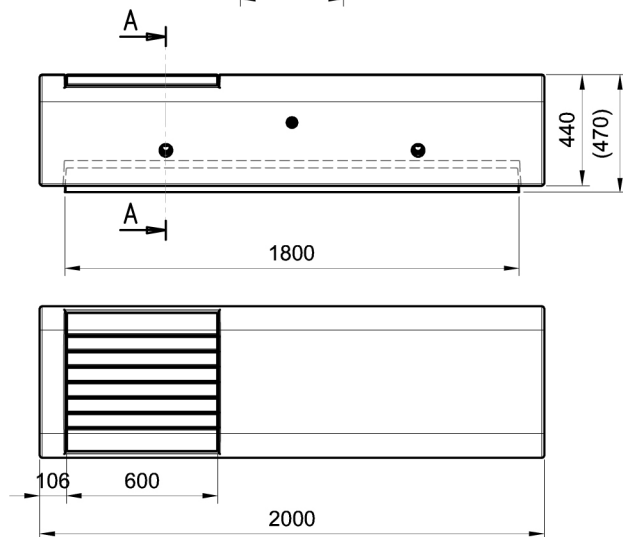
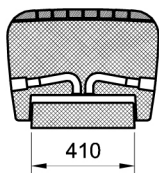
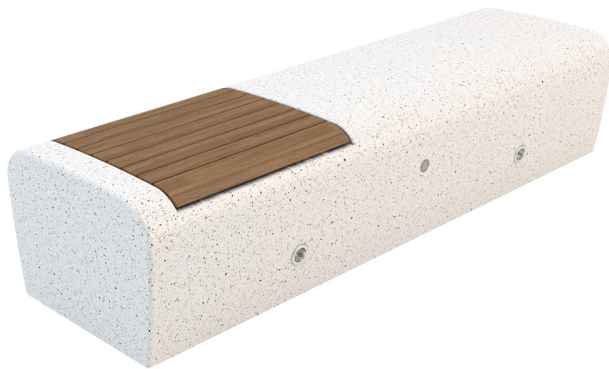
Sheet code: PAAR050

Drawing code:

Revision: 10/01/2019

Designer:

Arch. Lorenzo Tosolini



Product: Linear modular bench model “ONDA”, composed by a monolithic seat arranged to house LED spotlights or strips on both sides, with a built-in single seat, and supported by a base equipped with a **levelling system**.

Dimensions: length: 2000 mm;
width: 600 mm;
height: 470 mm (variable);
total weight: 1182 kg;

Material: The bench can be manufactured using reconstituted natural marble stones or white granite conglomerate. The insert seat is composed by 8 Wooden slats are offered with three different types of essence: pine, okumè or exotic wood (please see respective material sheet). All slats have a section of 55x35 mm, except for the head ones that have the same radius as the bench’s section. Slats are fastened to the seat through screws and four stainless steel plates, arranged to ease the water discharge under the slats.

Reinforcing: The self-levelling base is reinforced and fitted with bushes that permit its lifting and levelling. The seat is also reinforced and endowed with bushes that permit its lifting, and that are covered with a Bellitalia plate after the placement.

Finishing: All visible concrete surfaces are sandblasted, except for the seating surface that can be sandblasted or polished, to give the product a shiny effect. Surfaces are then covered with a transparent anti-decay coating, or, upon request, with anti-graffiti products. All wooden elements in pine and okumè can be impregnated and painted with a protective varnish, the exotic wood is impregnated and, upon request, varnished. All edges are rounded or made blunt.

Handling: Use appropriate equipment when handling.

Installation: Level the base screws and simply place the bench on the flooring.