

## “LOUNGE” Bench for 3 with armrest

**Sheet code:** PAAR073

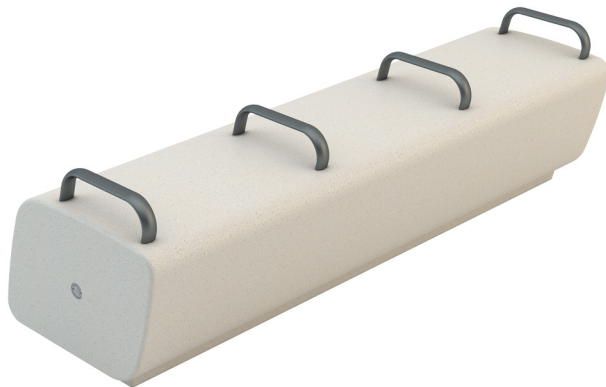
**Drawing code:**

**Revision:**

02\_01/10/2015

**Designer:**

Bellitalia Design Department



**Product:**

Linear modular bench model “LOUNGE” for three, composed by a monolithic seat, possibly equipped with four armrests.

**Dimensions:**

length: 1780 mm;  
width: 585 mm;  
height: 528 mm;  
total weight: about 652 kg.

**Material:**

The bench is manufactured using white granite conglomerate. The seat is manufactured in only one concrete casting. Steel armrests composed by a pipe with elliptical section 40x20 and 2 mm of thickness, equipped with thread bars held in place by specific resins; thread bars are then fastened to the seat's holes by bi-component chemical anchors.

**Reinforcing:**

The bench is reinforced and endowed with bushes that permit its lifting, and that are covered with a Bellitalia plate after the placement.

**Finishing:**

The bench's surfaces can be sandblasted or natural smooth, and are then covered with a transparent anti-decay coating, or, upon request, with nanotechnology and/or anti-graffiti products. All metal parts can be treated by a hot dip galvanisation and painted with RAL7021. All edges are rounded or made blunt.

**Handling:**

Use appropriate equipment when handling.

**Installation:**

Simply lay the bench on the flooring, accordingly with the chosen layout.

A-A

