

“LOUNGE” Bench for 3

Sheet code: PAAR070

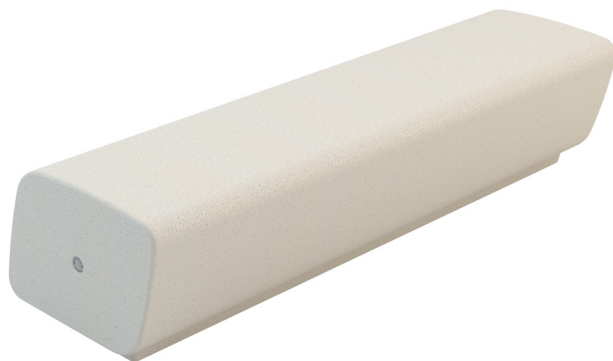
Drawing code:

Revision:

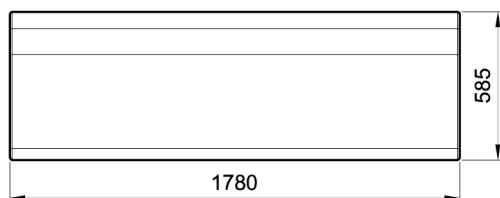
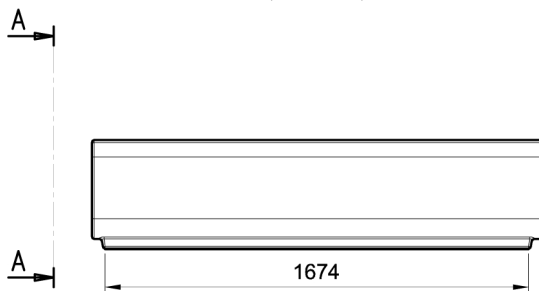
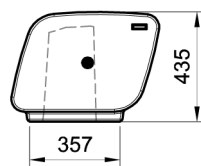
02_01/10/2015

Designer:

Bellitalia Design Department



A-A



Product: Linear modular bench model “LOUNGE” for three, composed by a monolithic seat.

Dimensions: length: 1780 mm;
width: 585 mm;
height: 435 mm;
total weight: about 650 kg.

Material: The bench is manufactured using white granite conglomerate. The seat is manufactured in only one concrete casting.

Reinforcing: The bench is reinforced and endowed with bushes that permit its lifting, and that are covered with a Bellitalia plate after the placement.

Finishing: The bench’s surfaces can be sandblasted or natural smooth, and are then covered with a transparent anti-decay coating, or, upon request, with nanotechnology and/or anti-graffiti products. All edges are rounded or made blunt.

Handling: Use appropriate equipment when handling.

Installation: Simply lay the bench on the flooring, accordingly with the chosen layout.